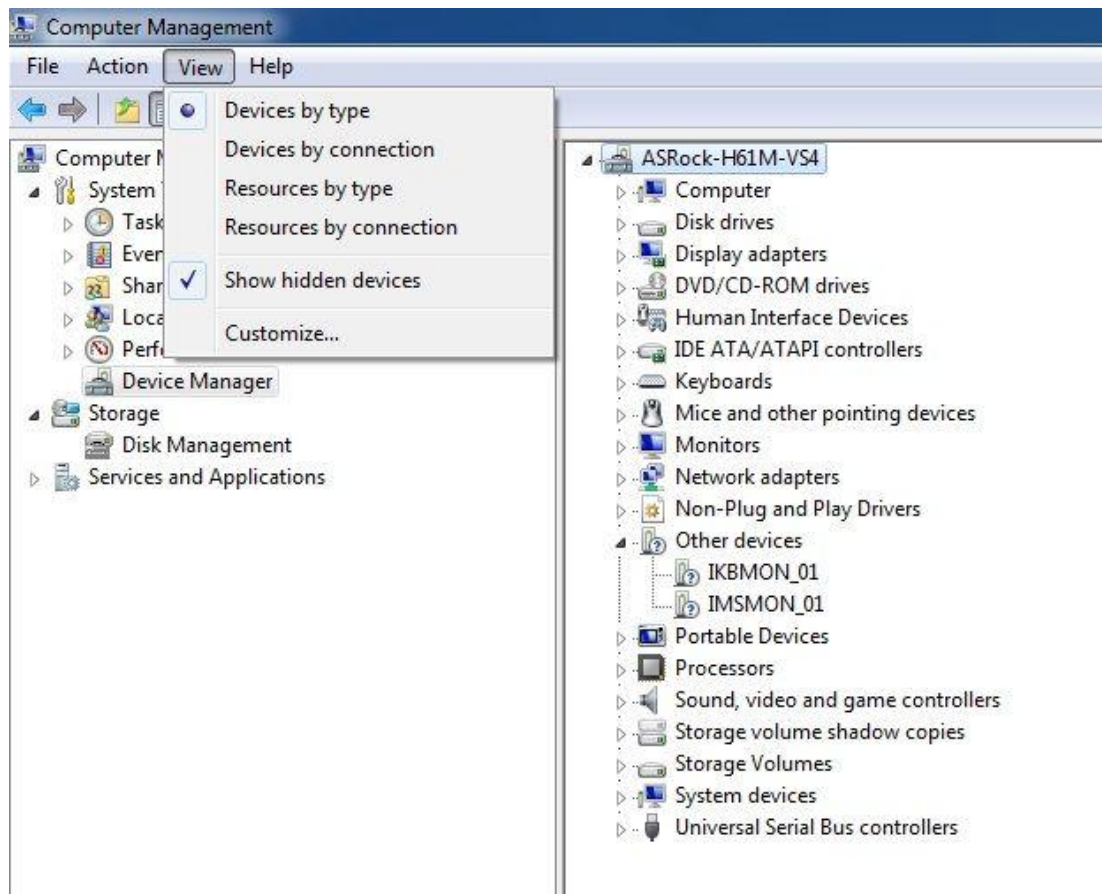


1. Q: Dupa instalarea tuturor driverelor de pe CD-ul suport, inca mai apar doua dispozitive necunoscute("IKBMON_01" si "IMSMON_01) in device manage al placii de baza H61. Ce driver este nevoie sa instaleaz pentru acestea?



A: Va rugam faceti update de driver pentru Intel Smart Connect Technology pentru aceste dispozitive

Linkul de unde puteti face descarcarea driver Intel Smart Connect Technology:

[http://download.asrock.com/drivers/Intel/SATA/SmartConnect\(v4.1.40.2143_PV\).zip](http://download.asrock.com/drivers/Intel/SATA/SmartConnect(v4.1.40.2143_PV).zip)