

1. Q: Cum instalez "XP mode" pe Win7 cu CPUAM3R2?

A: Instalati mai intai Microsoft hotfix kb2519949: altfel XP Mode poate sa nu fie instalat cu success.

Accesati link-ul de mai jos pentru a descarca acest hotfix.

<http://support.microsoft.com/kb/2519949>

2. Q: Cum instalez Ubuntu 11.10 pe Vision 3D Series (Sandy Bridge)?

A: Urmati pasii de mai jos:

Pasul 1. Adaugati parametrul "nomodeset" inainte de instalare. (un spatiu, apoi nomodeset).



Pasul 2. Cand faceti boot de la HDD prima oara dupa instalare, apasati shift cand se face boot pana cand apare meniul GRUB.

Pasul 3. Apasati "e" pentru a edita optiunea. Inlocuiti "quiet splash" cu "nomodeset".

```
setparams 'Ubuntu, with Linux 3.0.0-12-generic'

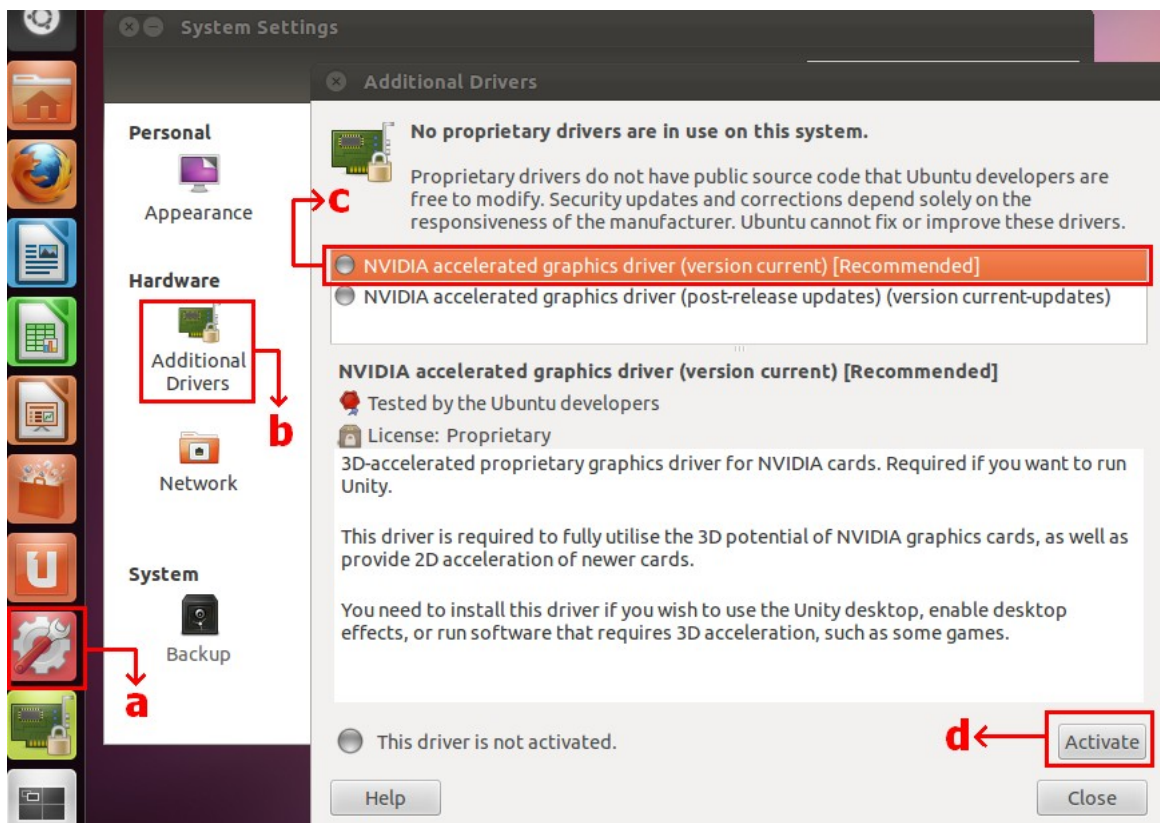
recordfail
set gfxpayload=$linux_gfx_mode
insmod gzio
insmod part_msdos
insmod ext2
set root='(hd0,msdos5)'
search --no-floppy --fs-uuid --set=root 76870d2d-bb1e-4de7-9710-f889\
31829787
linux /boot/vmlinuz-3.0.0-12-generic root=UUID=76870d2d-bb1e-4de7-97\
10-f88931829787 ro quiet splash vt.handoff=7
initrd /boot/initrd.img-3.0.0-12-generic
```

Replace with "nomodeset"

Pasul 4. Apasati Ctrl+X pentru a continua procesul de booting.

Pasul 5 Conectati-va la Internet si incepeti actualizarea driver-elor pentru placa video

[System Settings] > [Hardware] > [Additional Drivers] > Activate [NVIDIA accelerated graphics driver]



3. Q: Cum setez functiile ASRock XFast LAN cu functia Teaming?

A: Urmati pasii de mai jos:

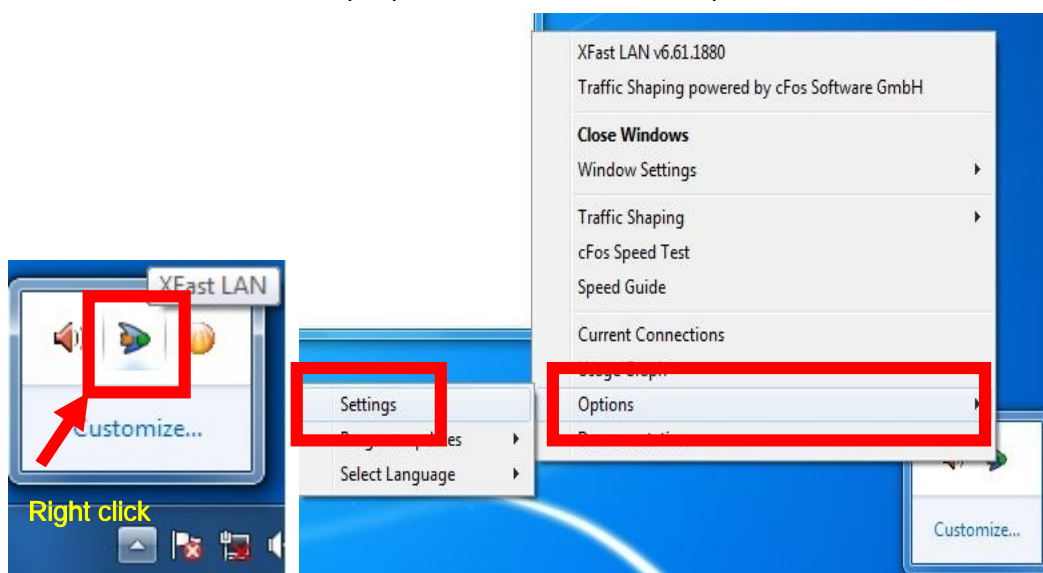
Pasul 1. Inlaturati toate cablurile LAN din sistem.

Pasul 2. Dupa finalizarea procedurii a instalarii OS, inserati CD-ul suport si instalati toate driver-ele de sistem si XFast LAN

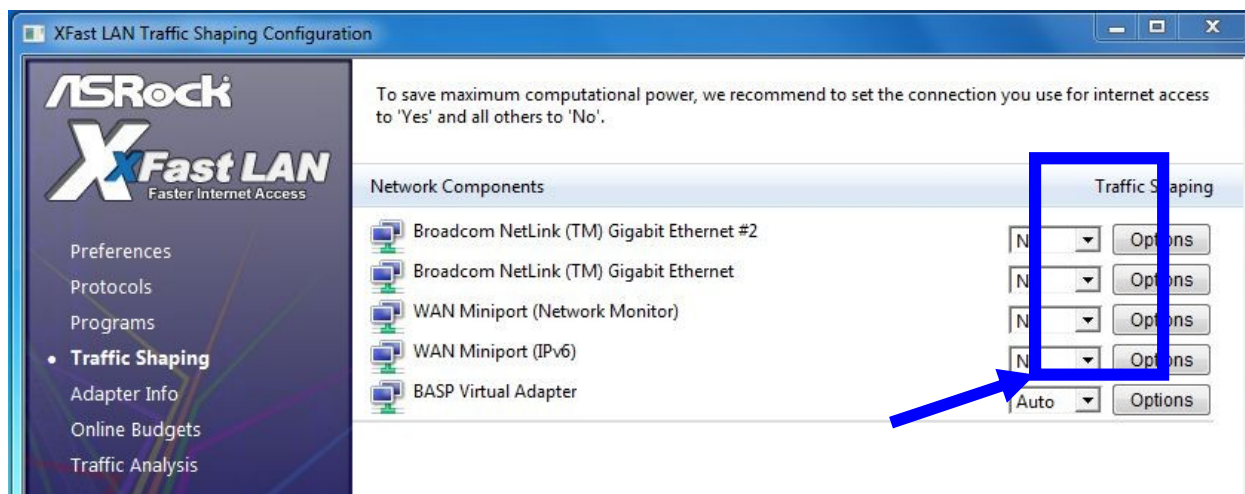
Pasul 3. Descarcati driver-ul teaming din urmatorul link si instalati-l.

Broadcom teaming driver download link: [32-bit OS](#) [64-bit OS](#)

Pasul 4. Sub OS, click dreapta pe XFast LAN si selectati optiunile →



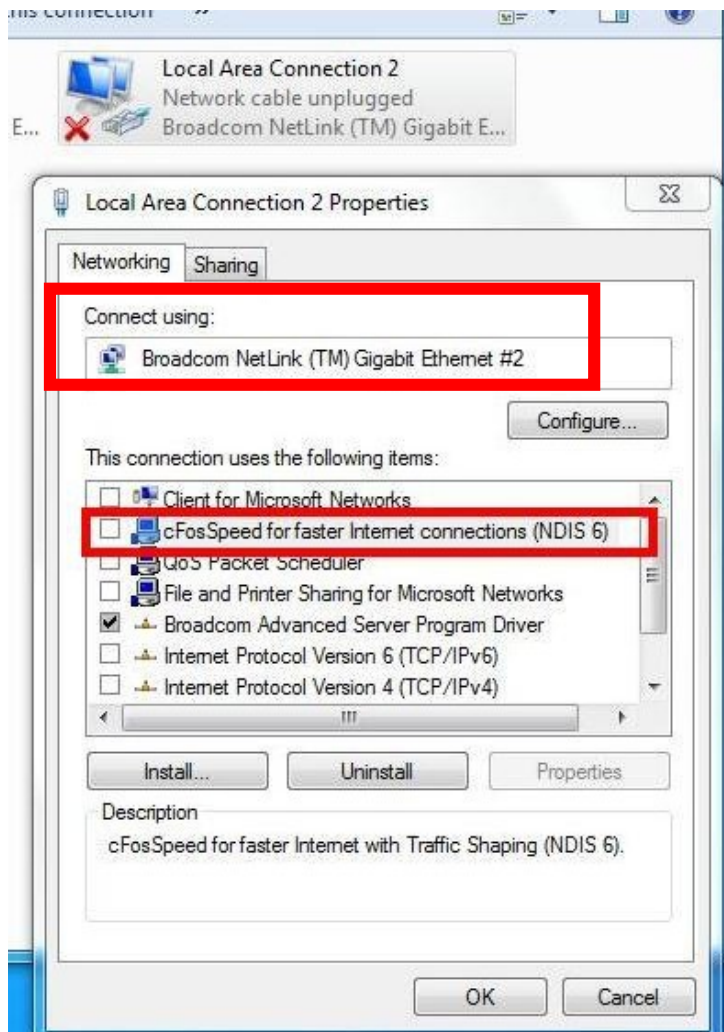
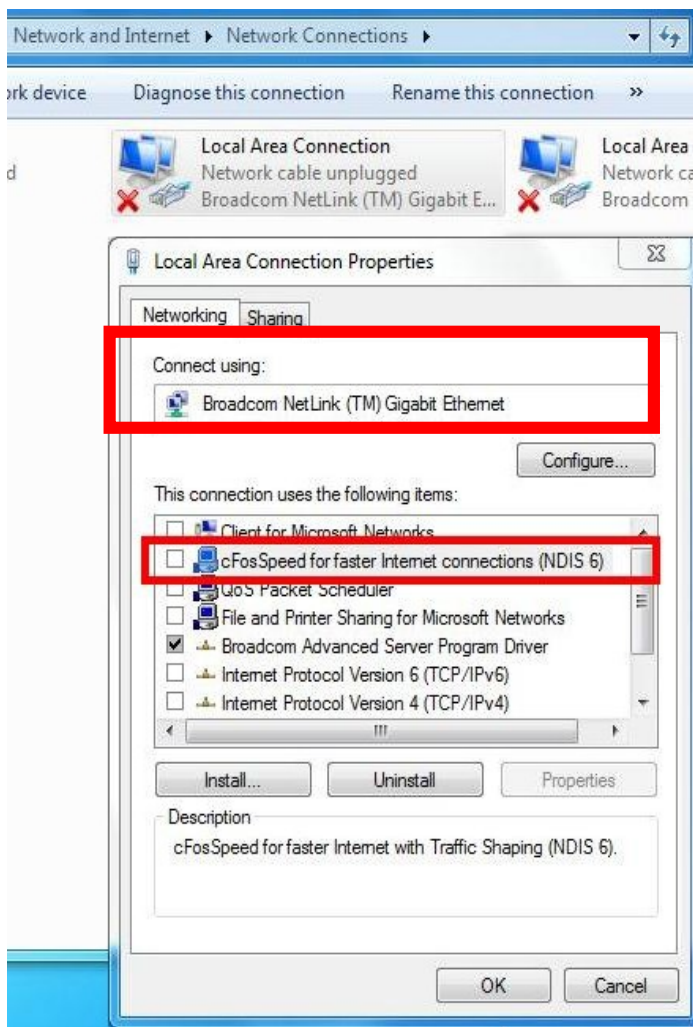
Pasul 5. La pagina Traffic Shaping, setati toate optiunile pe [No] inafara de BASP Virtual Adapter



Pasul 6. Adresati-va SOP pentru setarea functiei Broadcom Teaming.

Broadcom Teaming setup SOP: [Click here](#)

Pasul 7. Intrati in Network Connections si anulati selectia [cFos Speed for faster Internet connections (NDIS 6)] pentru Local Area Connection si Local Area connection2.



Pasul 8. Restartati sistemul o sigura data si conectati ambele cabluri LAN la sistem.