

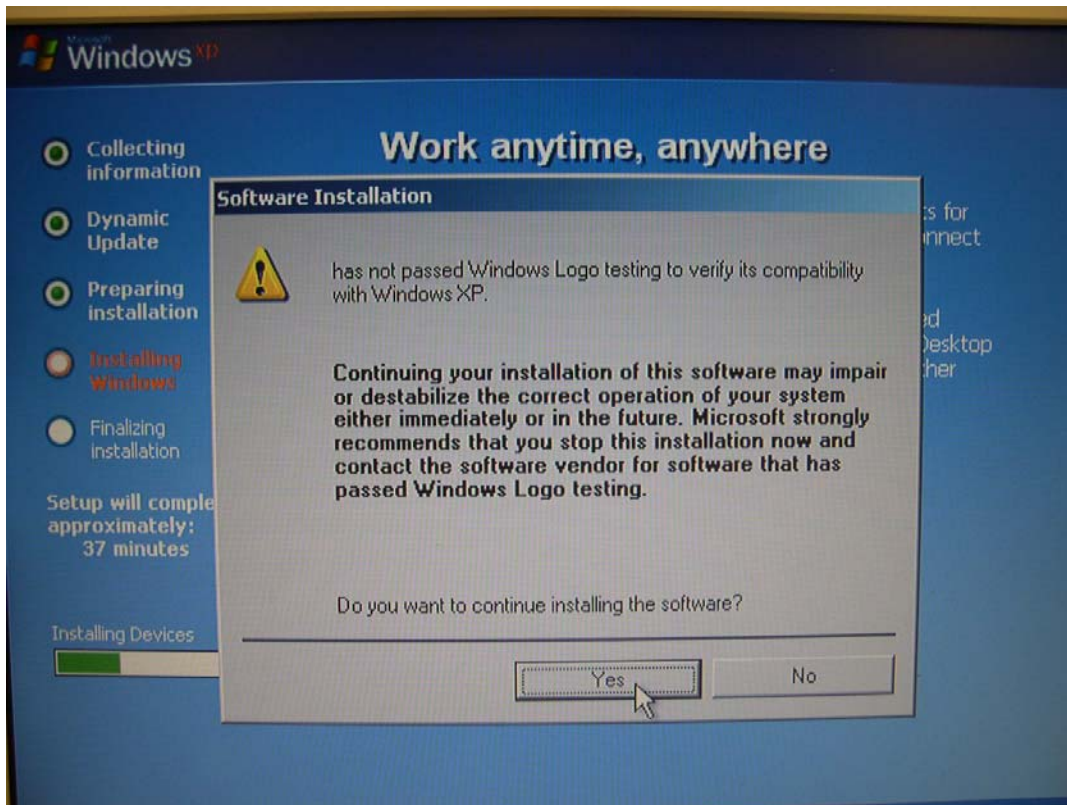
Technical Reference - Q&A

1. Q: My motherboard is K7S41(GX), what should I set in the BIOS setup to use the on-board VGA with a PCI VGA card for dual monitors function?

A: To use on-board VGA with a PCI VGA card for dual monitors function, please enter the “Advanced” -> “Chipset Configuration” -> “Onboard Share memory” and adjust “Auto” to any other values (32MB, 64 MB, or 128 MB) in the BIOS setup.

2. Q: When I install Windows XP with SATA HDD on K8 Combo-Z, I found driver logo warning messages during installation. What should I do?

A: You will see these kinds of warning messages (refer to the following picture) twice during Windows XP installation.



When you see the warning messages, please select "Yes" for both.

3. Q: I'm using K7VT4A+. From the specification on the website, this model supports FSB 333 MHz CPU. However, I found a FSB 400 MHz FSB jumper setting on the PCB of the motherboard. Can this motherboard support FSB 400 MHz CPU?

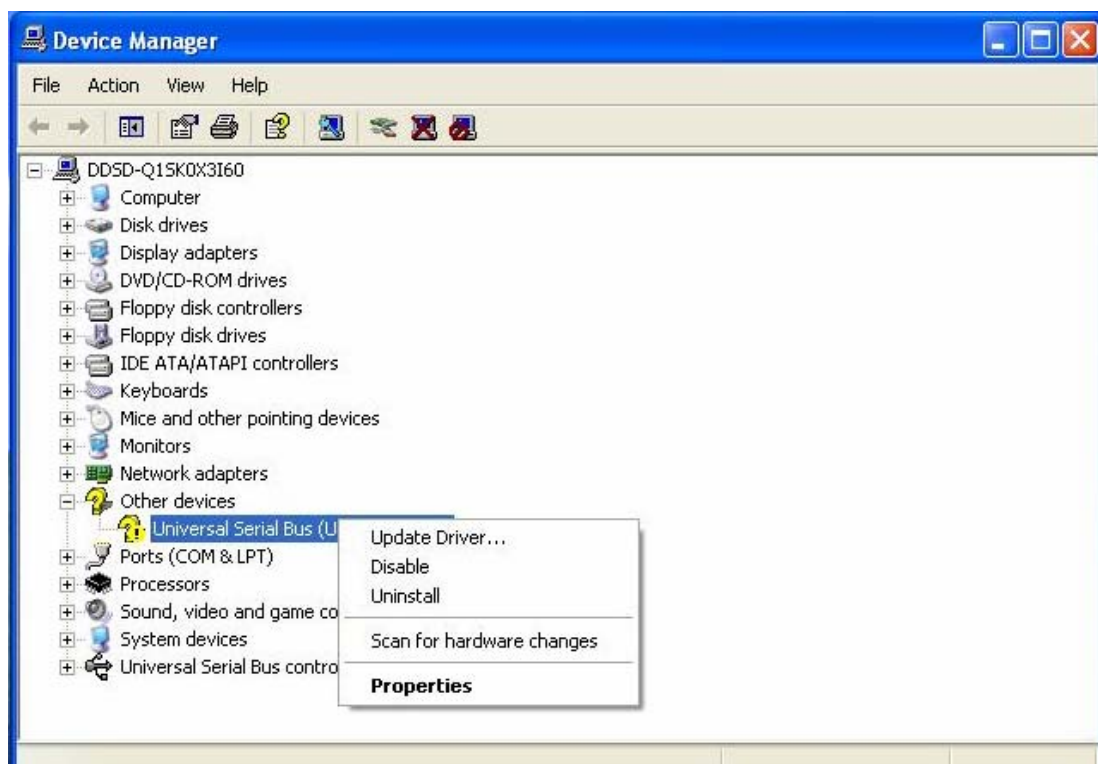
A: K7VT4A+ does not support FSB 400 MHz CPU. The FSB 400 MHz jumper setting is an overclocking mode and for testing only. For system stability, it is not recommended to set the FSB jumper at FSB 400 MHz.

4. Q: My OS is Windows XP (or Windows 2000), and I have installed XP Service Pack 1 (Windows 2000 Service Pack 4). But when I use USB 2.0 devices, it will show

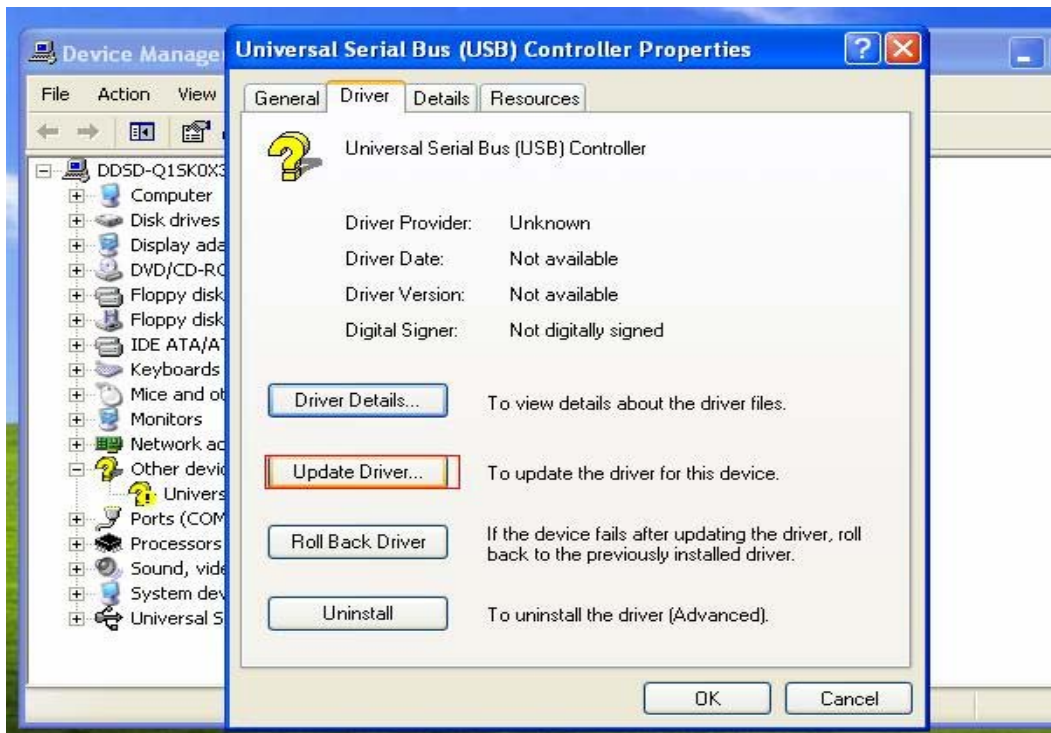
“High-Speed devices is attached to a non-Hi-Speed port”. How can I use USB 2.0 devices?

A: Please go to “device manager” to check if the driver was installed properly. If not, please do the following steps.

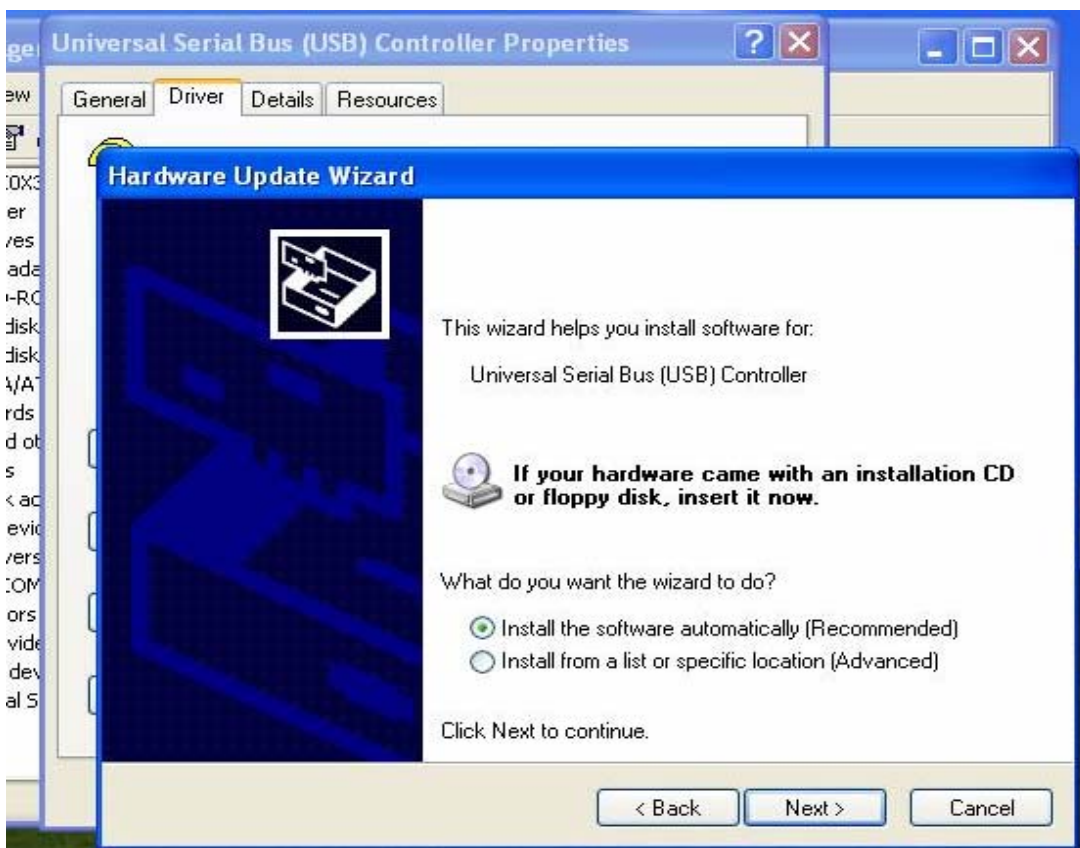
1. Right click the exclamation mark device and choose properties.



2. Click “ update driver”.



3. Choose “ Install the software automatically”



4. Then it will find the device. Please click finish.

